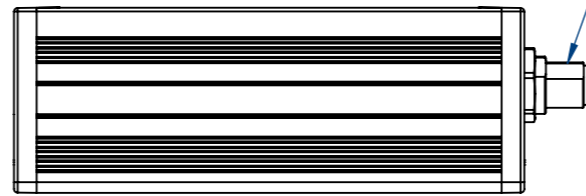
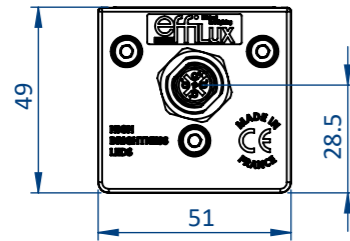
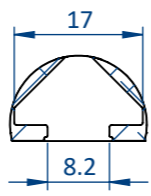
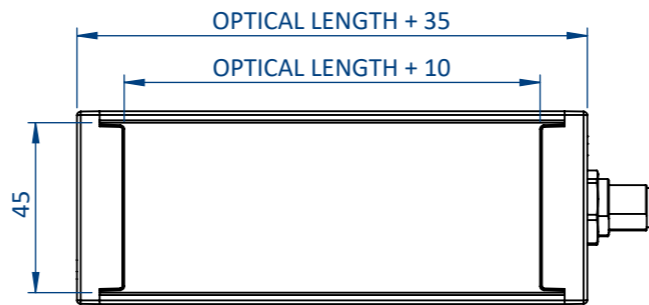
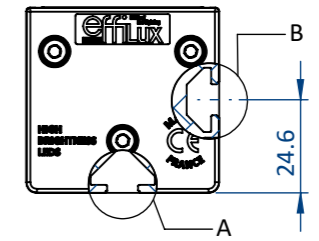


THIS DOCUMENT AND THE INFORMATION IT CONTAINS ARE PROPERTY OF EFFILUX AND CONFIDENTIAL. THEY SHALL NOT BE REPRODUCED NOR DISCLOSED TO ANY PERSON EXCEPT TO THOSE HAVING A NEED TO KNOW THEM WITHOUT PRIOR WRITTEN CONSENT OF EFFILUX

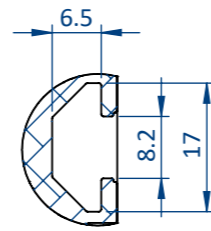
CE DOCUMENT ET LES INFORMATIONS QU'IL CONTIENT SONT CONFIDENTIELS ET SONT LA PROPRIETE EXCLUSIVE DE EFFILUX. ILS NE DOIVENT ETRE COMMUNIQUEES QU'AUX PERSONNES AYANT A EN CONNAITRE ET NE PEUVENT ETRE REPRODUITS NI DIVULGUES A TOUTE AUTRE PERSONNE SANS AUTORISATION PREALABLE ECRITE PAR EFFILUX



M12-5 PINS OR M12P-4 PINS DEPENDING ON POWER CONSUMPTION REFER TO THE DATASHEET

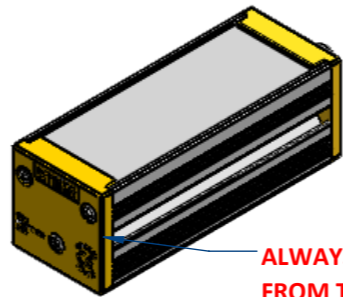


DETAIL A
SCALE 1 : 1
MOUNTING: T-NUT 8MM SLOT, M6



DETAIL B
SCALE 1 : 1
MOUNTING: T-NUT 8MM SLOT, M6

OPTICAL LENGTH (XXXX)	PRODUCT LENGTH	WEIGHT (KG)
60	95	0,3
100	135	0,4
200	235	0,7
300	335	1,0
400	435	1,3
500	535	1,6
600	635	1,9
...
1500	1535	4,6
1600	1635	4,9



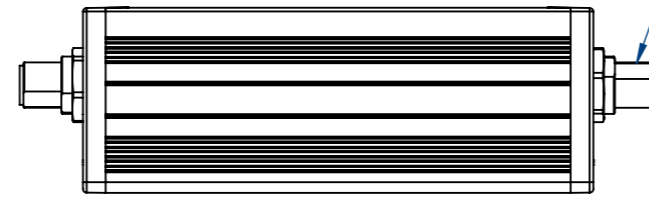
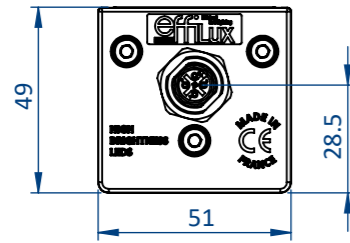
ALWAYS OPEN THE PRODUCT FROM THIS SIDE

PLEASE REFER TO THE SPECIFIC DOCUMENTATION FOR WIRING LAYOUT

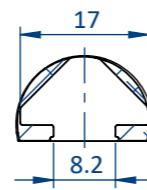
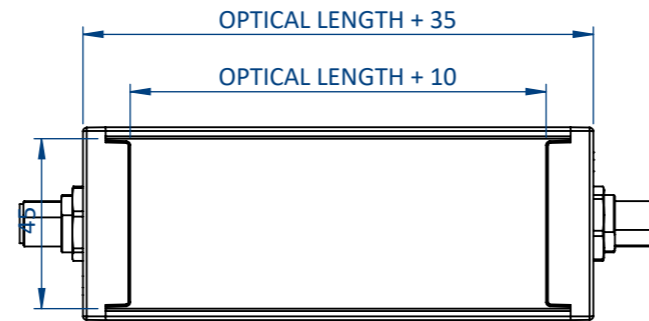
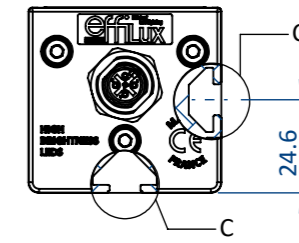
Reference STANDARD EFFI-FLEX-2		IP 5X	1 Rue de Terre Neuve Mini Parc du Verger Bâtiment E 91940 Les Ulis, France	
Designation EFFI-FLEX2-XXXX-ZZZ-WW-PP		Mail: sales@effilux.fr Tel : +33 9 72 52 70 03 www.effilux.com		
Revision /	Date 22/04/2024	Unit : mm	General Tolerances	
Scale 1:2	Size A3	Page 1/2	X ≤ 300 TOL ±0,2 300 < X < 800 TOL ±0,5 X ≥ 800 TOL ± 1	

THIS DOCUMENT AND THE INFORMATION IT CONTAINS ARE PROPERTY OF EFFILUX AND CONFIDENTIAL. THEY SHALL NOT BE REPRODUCED NOR DISCLOSED TO ANY PERSON EXCEPT TO THOSE HAVING A NEED TO KNOW THEM WITHOUT PRIOR WRITTEN CONSENT OF EFFILUX

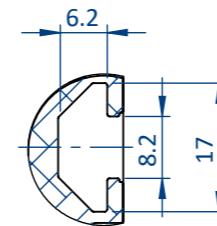
CE DOCUMENT ET LES INFORMATIONS QU'IL CONTIENT SONT CONFIDENTIELS ET SONT LA PROPRIETE EXCLUSIVE DE EFFILUX. ILS NE DOIVENT ETRE COMMUNIQUEES QU'AUX PERSONNES AYANT A EN CONNAITRE ET NE PEUVENT ETRE REPRODUITS NI DIVULGUES A TOUTE AUTRE PERSONNE SANS AUTORISATION PREALABLE ECRITE PAR EFFILUX



M12P-4 PINS
REFER TO THE DATASHEET

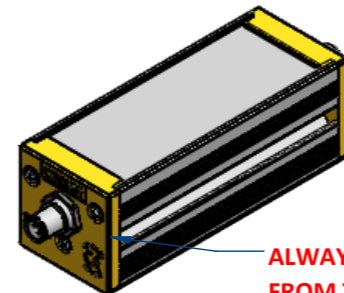


DETAIL C
SCALE 1 : 1
MOUNTING: T-NUT 8MM SLOT, M6



DETAIL C
SCALE 1 : 1
MOUNTING: T-NUT 8MM SLOT, M6

OPTICAL LENGTH (XXXX)	PRODUCT LENGTH	WEIGHT (KG)
1700	1735	5,2
1800	1835	5,5
1900	1935	5,8
2000	2035	6,1
2100	2135	6,4
2200	2235	6,7
2300	2335	7,0
...
2800	2835	8,5
2900	2935	8,8



ALWAYS OPEN THE PRODUCT FROM THIS SIDE

PLEASE REFER TO THE SPECIFIC DOCUMENTATION FOR WIRING LAYOUT

Reference STANDARD EFFI-FLEX-2		IP 5X	1 Rue de Terre Neuve Mini Parc du Verger Bâtiment E 91940 Les Ulis, France	
Designation EFFI-FLEX2-XXXX-ZZZ-WW-PP-2M12P		Mail: sales@effilux.fr Tel : +33 9 72 52 70 03 www.effilux.com		
Revision /	Date 22/04/2024	Unit : mm	General Tolerances	
Scale 1:2	Size A3	Page 2/2	X ≤ 300 TOL ±0,2 300 < X < 800 TOL ±0,5 X ≥ 800 TOL ± 1	