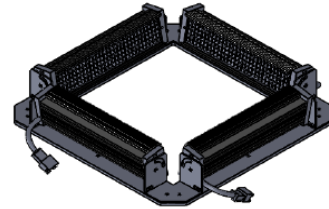
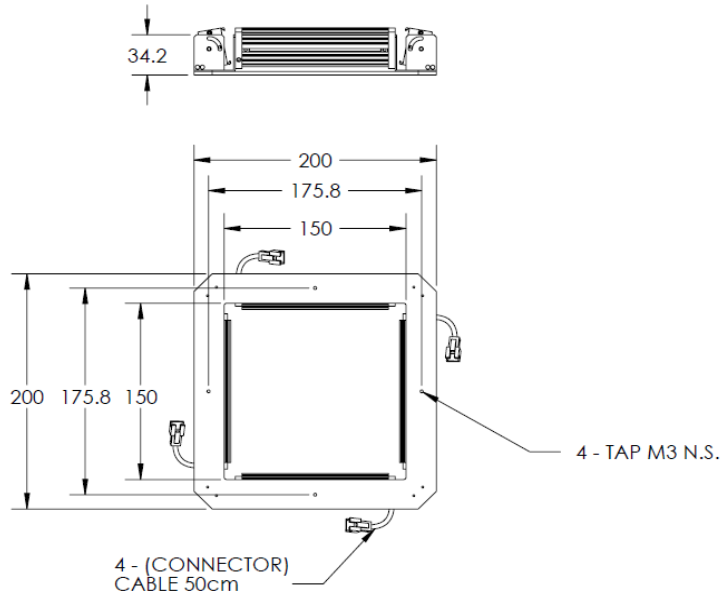




# ILLUMINATOR DATA-ID

**LBRQ-00-120-6-IR850-24V**

## Lighting Dimension




Mechanical Information	
Casing Material	Aluminium
Storage Temperature Range	Temp 0-45°C, Humidity 20-85%
Weight	130
Length / Outer Diameter	200
Width / Inner Diameter	150
Thickness / Height	34.2



# ILLUMINATOR DATA-ID

## LBRQ-00-120-6-IR850-24V

<b>Optical Information</b>			
Part Number		LBRQ-00-120-6-IR850-24V	
LED Color		IR	
Wavelength	(nm)	850	
Intensity (±15%)	(Lux)	NA	
Working Distance	(mm)	NA	
Illumination (number of row)		6	
Illumination Active Area			
Active Length / Outer Diameter	(mm)	150	
Active Width / Inner Diameter	(mm)	200	
Emission angle	(deg.)	0	
Eye Safety Class ( IEC62471 )		EXEMPT	
<b>Electrical Information</b>			
Lighting Supply Voltage (constant voltage mode)		24V ± 2%	
Continuous Current	(mA)	864	
Power Consumption	(W)	20	
Lighting casing temperature, Operating after 60 minutes	°C	TBA	
<b>Strobe Mode Specification</b>			
Pulse Operation		YES	
Max. Lighting Supply Voltage (Constant voltage power supply)	(V)	Pulsing at 24VDC to 48VDC, 0-10% Duty Cycle Recommended at 36VDC	
Pulse Current, (Max. 10msec) (Constant current power supply)	(mA)	2592	
Max. Trigger Pulse Duration	(msec)	10	
Duty Cycle		0-10%	
<b>Additional Information</b>			
Additional Cooling Method		Attached to machine part for better heat dissipation	
Intensity Controller Selection		ANG, ST, SD and SDA Series	
CE Conformity		YES	
RoHS Compliance		YES	
<b>Connection</b>			
Connector Type (Default):		JST SMR-03V	
Cable Length out from lighting :	(mm)	500	
Pin Configuration :		Pin	Signal
		1	LED +
		2	N.C.
		3	LED -
			Cable Color
			RED
			---
			WHITE
			
<b>Application</b>			
Illumination Type		IR Illumination	
Application Use		General illumination, label inspection, character illumination, code recognition	