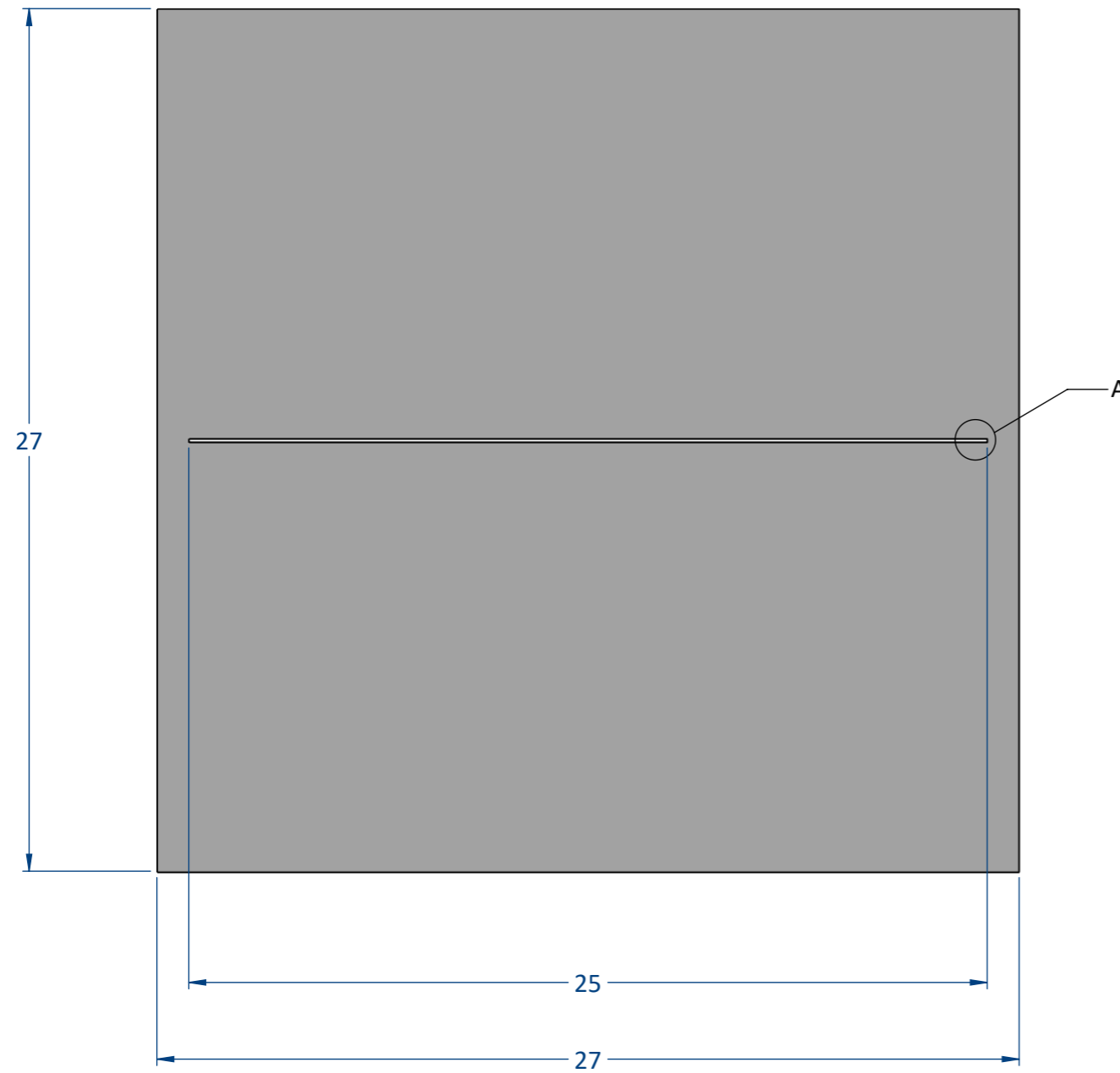


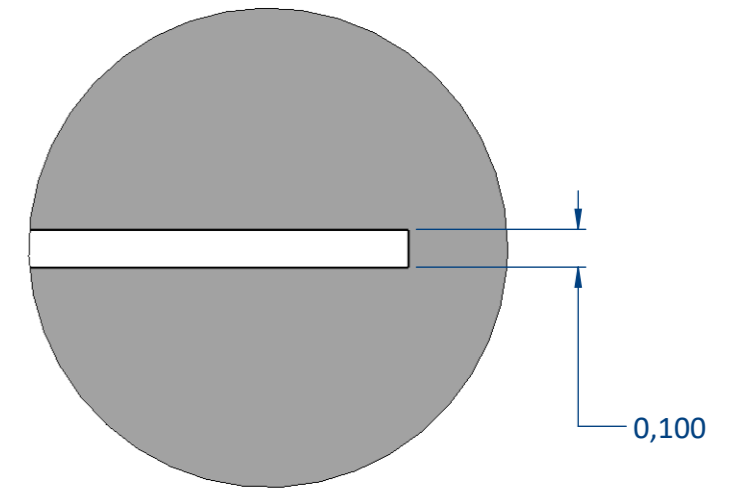
THIS DOCUMENT AND THE INFORMATION IT CONTAINS ARE PROPERTY OF EFFILUX AND CONFIDENTIAL. THEY SHALL NOT BE REPRODUCED NOR DISCLOSED TO ANY PERSON EXCEPT TO THOSE HAVING A NEED TO KNOW THEM WITHOUT PRIOR WRITTEN CONSENT OF EFFILUX

CE DOCUMENT ET LES INFORMATIONS QU'IL CONTIENT SONT CONFIDENTIELS ET SONT LA PROPRIETE EXCLUSIVE DE EFFILUX. ILS NE DOIVENT ETRE COMMUNIQUEES QU' AUX PERSONNES AYANT A EN CONNAITRE ET NE PEUVENT ETRE REPRODUITS NI DIVULGUES A TOUTE AUTRE PERSONNE SANS AUTORISATION PREALABLE ECRITE PAR EFFILUX

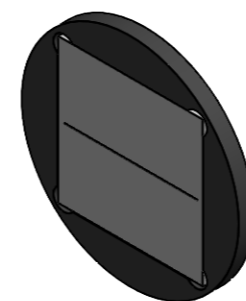
EFFECTIVE AREA



DETAIL OF THE PATERN



DETAIL A
SCALE 50 : 1



NOTE : ALL DIMENSIONS ARE IN MILLIMETERS

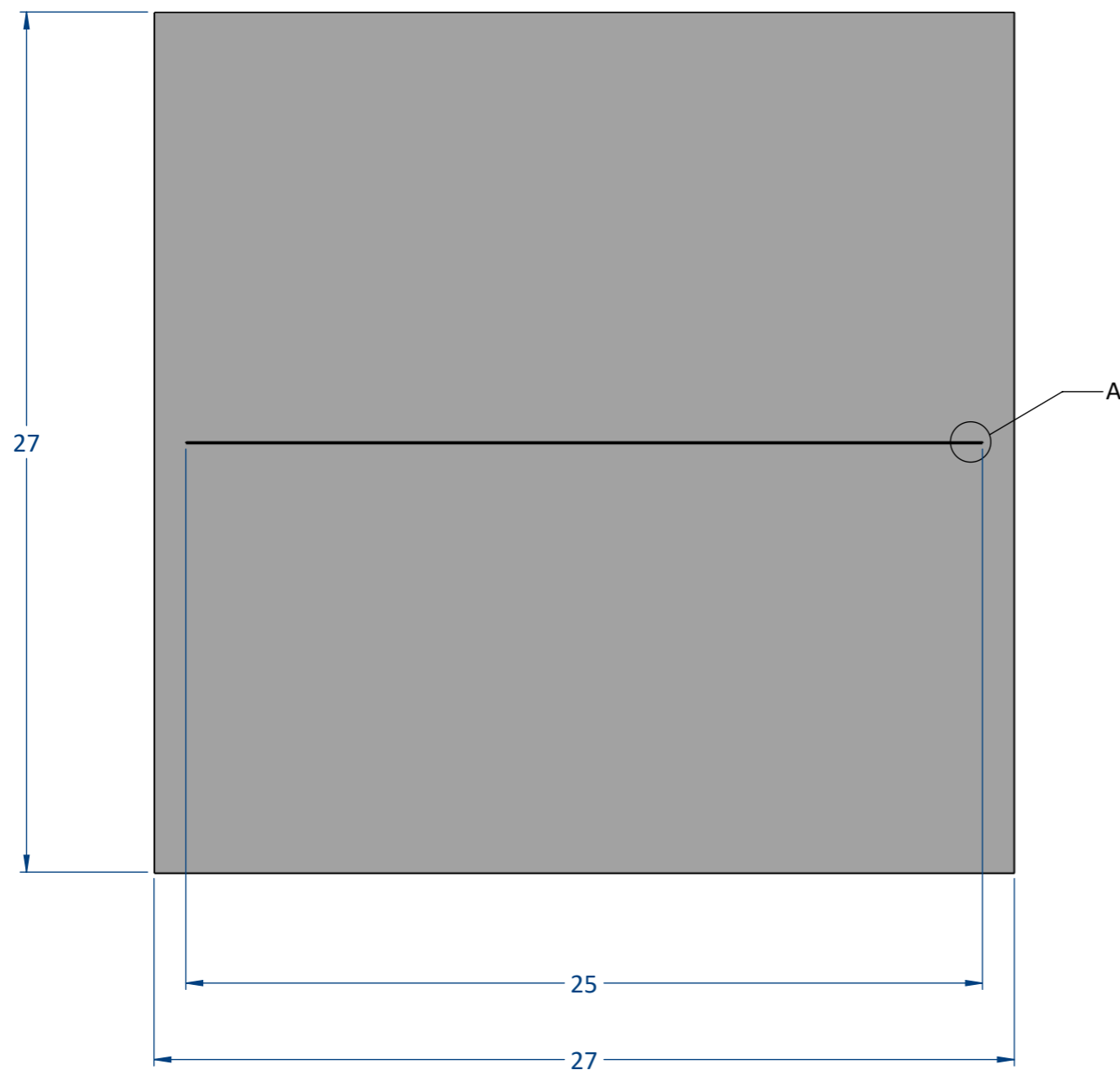
| | | |
|-----------|----|------------|
| DES/ DRA. | cd | 23/04/2024 |
| APPROVED | cd | 23/04/2024 |

| | | | | |
|----------------------------------|--------------|--|---|---------------|
| Reference EFFO-MSK-L01 | | IP / | 1 Rue de Terre Neuve Mini Parc du Verger Bâtiment E 91940 Les Ulis, France | |
| Designation - | | Mail: sales@effilux.fr Tel : +33 9 72 52 70 03 www.effilux.com | | |
| Rev / | Scale 5:1 | Size A3 | Page 1/1 | Unit : mm |
| General Tolerances | | | | |
| X ≤ 300 TOL ±0,2 | | | | |
| 300 < X < 800 TOL ±0,5 | | | | |
| X ≥ 800 TOL ± 1 | | | | |

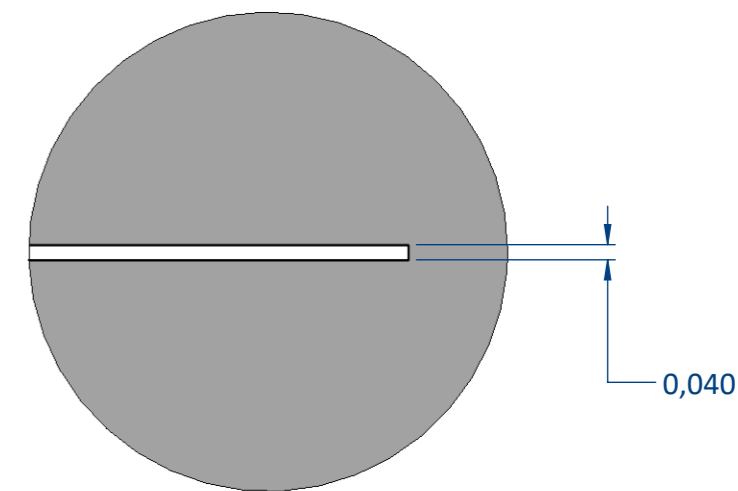
THIS DOCUMENT AND THE INFORMATION IT CONTAINS ARE PROPERTY OF EFFILUX AND CONFIDENTIAL. THEY SHALL NOT BE REPRODUCED NOR DISCLOSED TO ANY PERSON EXCEPT TO THOSE HAVING A NEED TO KNOW THEM WITHOUT PRIOR WRITTEN CONSENT OF EFFILUX

CE DOCUMENT ET LES INFORMATIONS QU'IL CONTIENT SONT CONFIDENTIELS ET SONT LA PROPRIETE EXCLUSIVE DE EFFILUX. ILS NE DOIVENT ETRE COMMUNIQUEES QU' AUX PERSONNES AYANT A EN CONNAITRE ET NE PEUVENT ETRE REPRODUITS NI DIVULGUES A TOUTE AUTRE PERSONNE SANS AUTORISATION PREALABLE ECRITE PAR EFFILUX

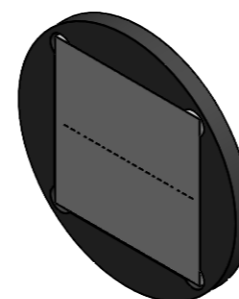
EFFECTIVE AREA



DETAIL OF THE PATERN



DETAIL A
SCALE 50 : 1



NOTE : ALL DIMENSIONS ARE IN MILLIMETERS

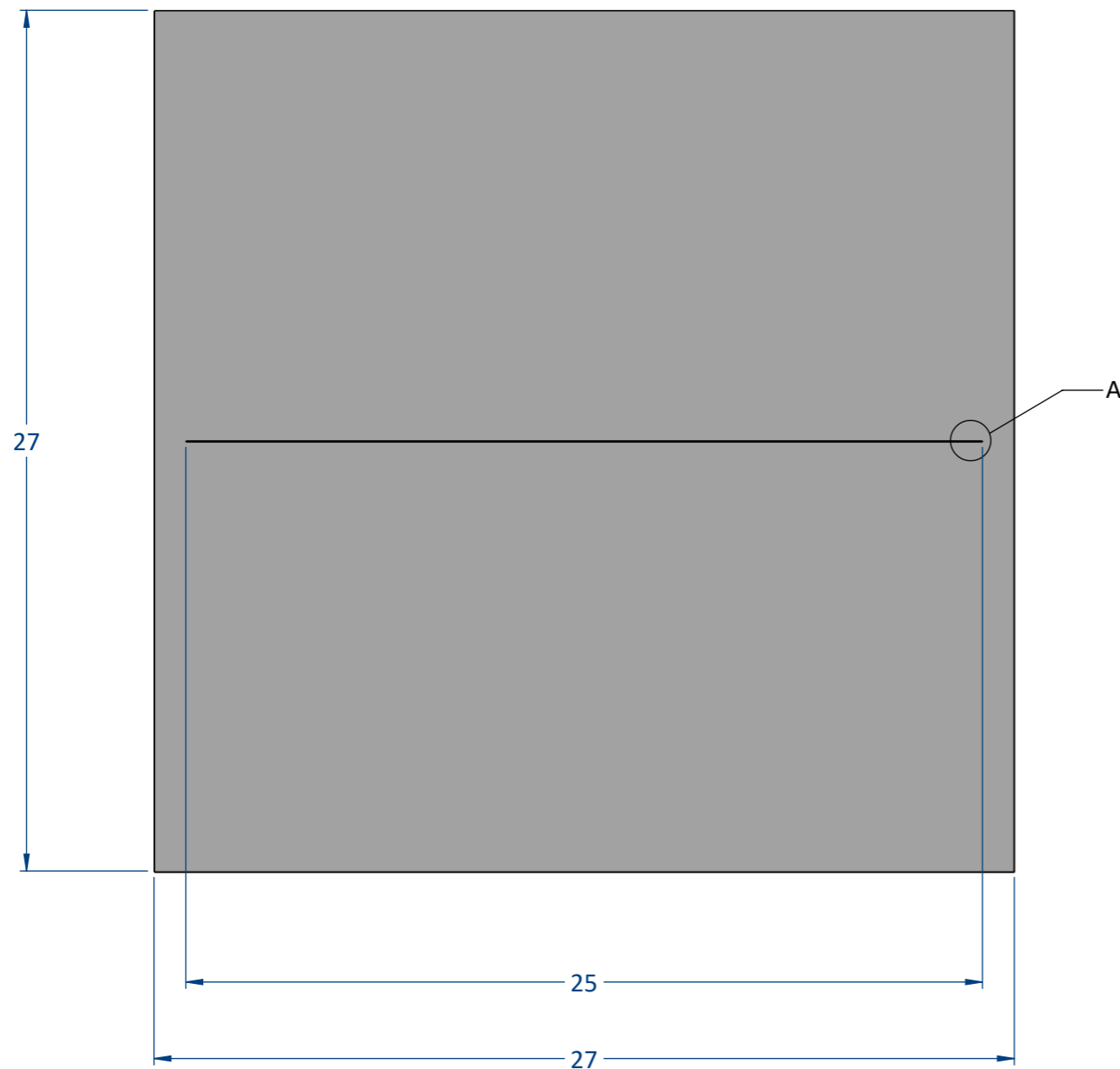
| | | |
|-----------|----|------------|
| DES/ DRA. | cd | 23/04/2024 |
| APPROVED | cd | 23/04/2024 |

| | | | | |
|----------------------------------|--------------|------------|---|---------------|
| Reference EFFO-MSK-L02 | | IP / | 1 Rue de Terre Neuve Mini Parc du Verger Bâtiment E 91940 Les Ulis, France | |
| Designation - | | | Mail: sales@effilux.fr Tel : +33 9 72 52 70 03 www.effilux.com | |
| Rev / | Scale 5:1 | Size A3 | Page 1/1 | Unit : mm |
| General Tolerances | | | | |
| X ≤ 300 TOL ±0,2 | | | | |
| 300 < X < 800 TOL ±0,5 | | | | |
| X ≥ 800 TOL ± 1 | | | | |

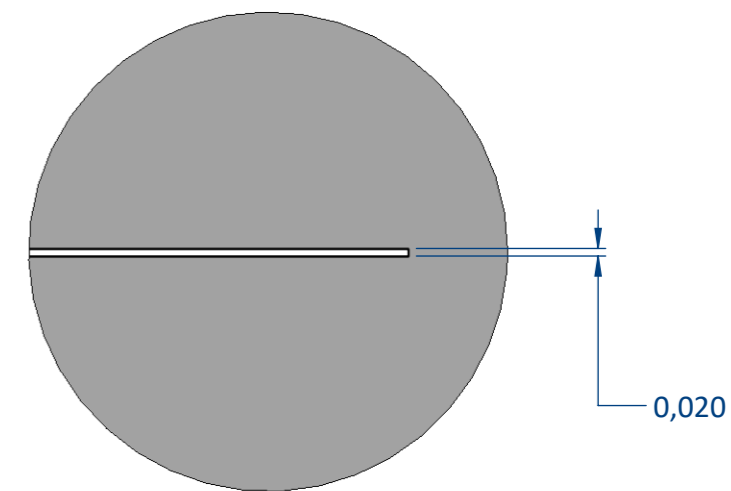
THIS DOCUMENT AND THE INFORMATION IT CONTAINS ARE PROPERTY OF EFFILUX AND CONFIDENTIAL. THEY SHALL NOT BE REPRODUCED NOR DISCLOSED TO ANY PERSON EXCEPT TO THOSE HAVING A NEED TO KNOW THEM WITHOUT PRIOR WRITTEN CONSENT OF EFFILUX

CE DOCUMENT ET LES INFORMATIONS QU'IL CONTIENT SONT CONFIDENTIELS ET SONT LA PROPRIETE EXCLUSIVE DE EFFILUX. ILS NE DOIVENT ETRE COMMUNIQUEES QU' AUX PERSONNES AYANT A EN CONNAITRE ET NE PEUVENT ETRE REPRODUITS NI DIVULGUES A TOUTE AUTRE PERSONNE SANS AUTORISATION PREALABLE ECRITE PAR EFFILUX

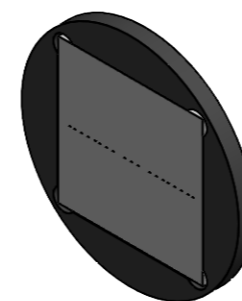
EFFECTIVE AREA



DETAIL OF THE PATERN



DETAIL A
SCALE 50 : 1



NOTE : ALL DIMENSIONS ARE IN MILLIMETERS

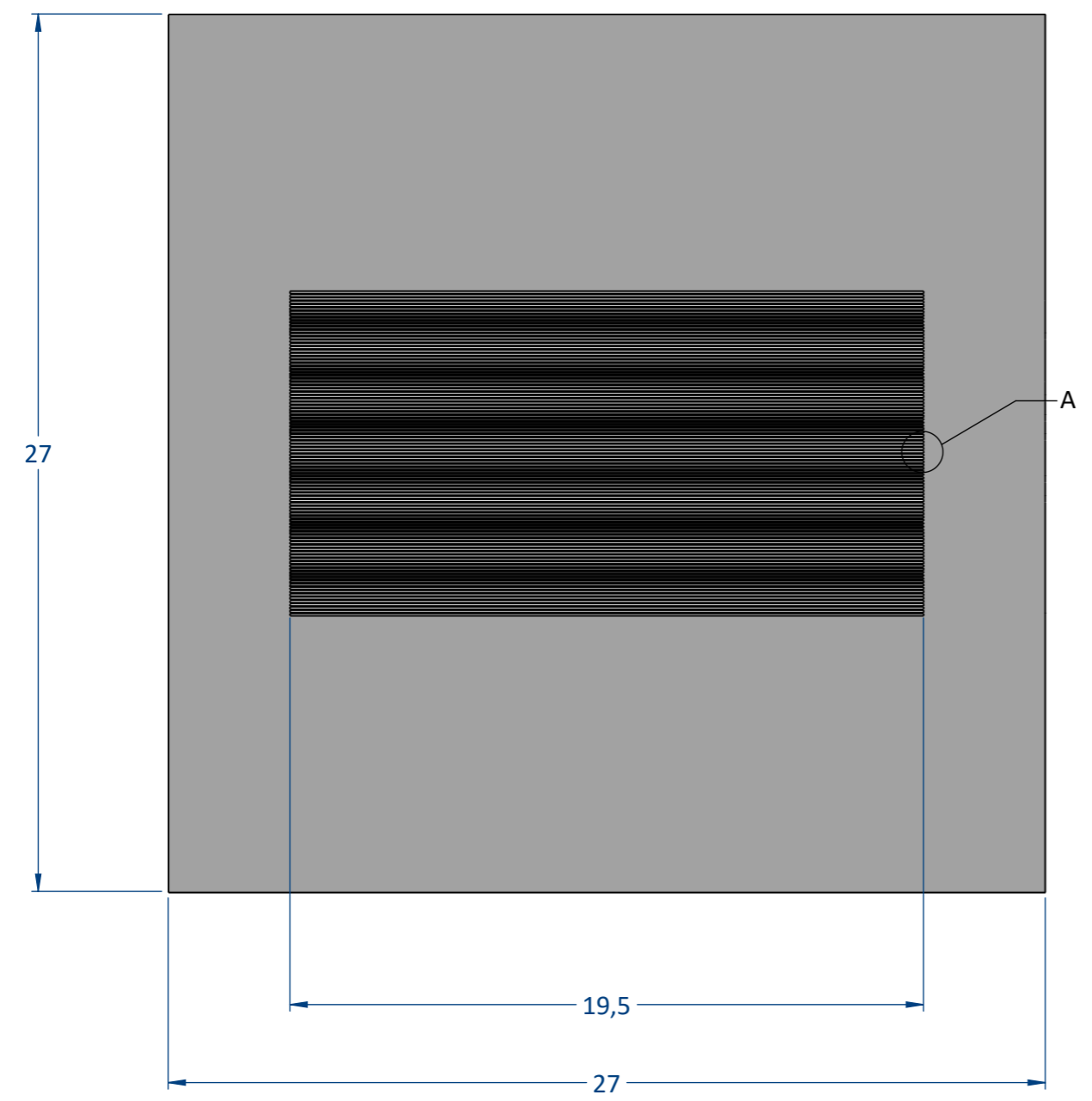
| | | |
|-----------|----|------------|
| DES/ DRA. | cd | 23/04/2024 |
| APPROVED | cd | 23/04/2024 |

| | | | | |
|----------------------------------|--------------|--|---|---------------|
| Reference EFFO-MSK-L03 | | IP / | 1 Rue de Terre Neuve Mini Parc du Verger Bâtiment E 91940 Les Ulis, France | |
| Designation - | | Mail: sales@effilux.fr Tel : +33 9 72 52 70 03 www.effilux.com | | |
| Rev / | Scale 5:1 | Size A3 | Page 1/1 | Unit : mm |
| General Tolerances | | | | |
| X ≤ 300 TOL ±0,2 | | | | |
| 300 < X < 800 TOL ±0,5 | | | | |
| X ≥ 800 TOL ± 1 | | | | |

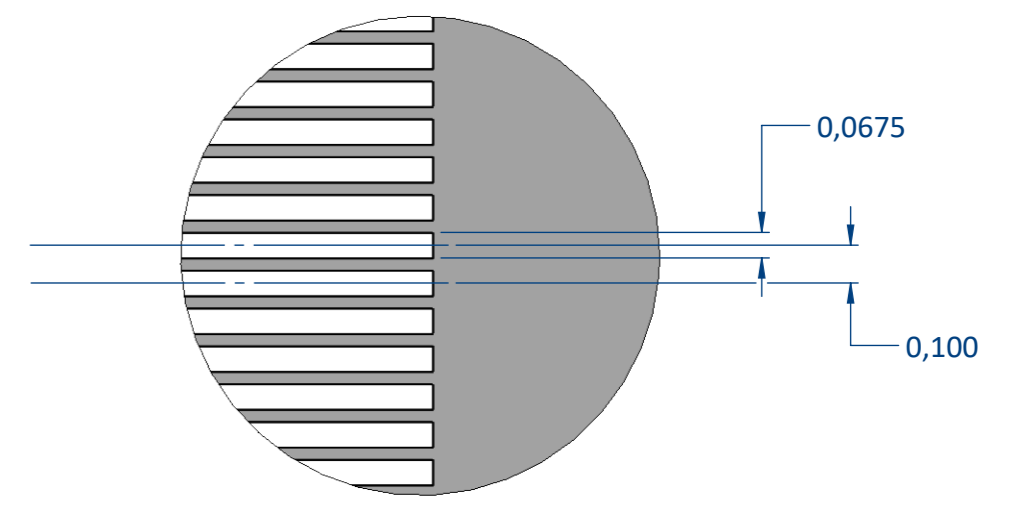
THIS DOCUMENT AND THE INFORMATION IT CONTAINS ARE PROPERTY OF EFFILUX AND CONFIDENTIAL. THEY SHALL NOT BE REPRODUCED NOR DISCLOSED TO ANY PERSON EXCEPT TO THOSE HAVING A NEED TO KNOW THEM WITHOUT PRIOR WRITTEN CONSENT OF EFFILUX

CE DOCUMENT ET LES INFORMATIONS QU'IL CONTIENT SONT CONFIDENTIELS ET SONT LA PROPRIETE EXCLUSIVE DE EFFILUX. ILS NE DOIVENT ETRE COMMUNIQUEES QU'aux PERSONNES AYANT A EN CONNAITRE ET NE PEUVENT ETRE REPRODUITS NI DIVULGUES A TOUTE AUTRE PERSONNE SANS AUTORISATION PREALABLE ECRITE PAR EFFILUX

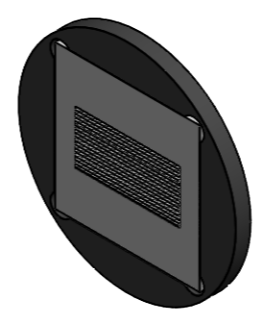
EFFECTIVE AREA



DETAIL OF THE PATERN



DETAIL A
SCALE 50 : 1



NOTE : ALL DIMENSIONS ARE IN MILLIMETERS

| | | |
|-----------|----|------------|
| DES/ DRA. | cd | 23/04/2024 |
| APPROVED | cd | 23/04/2024 |

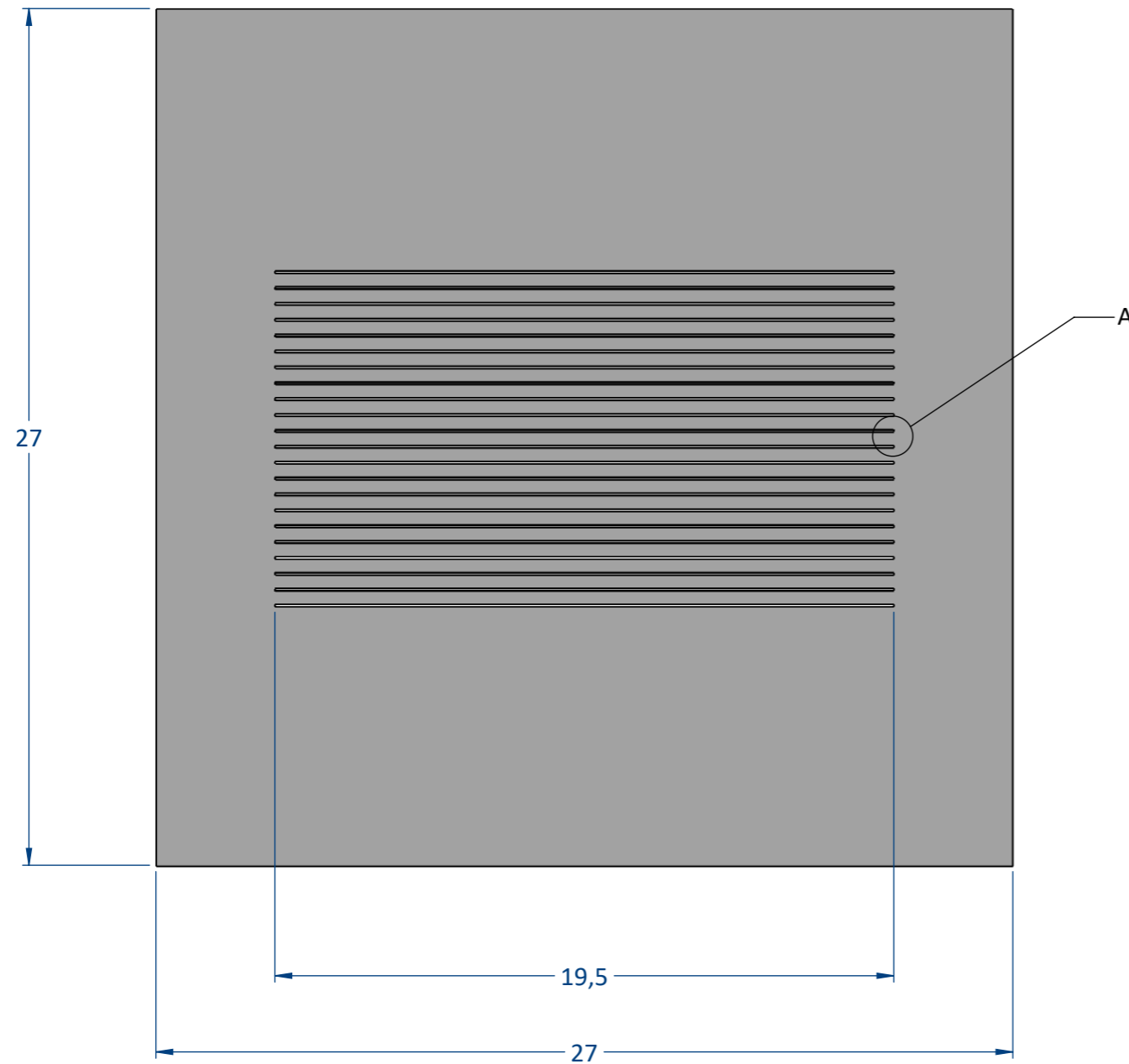
| | | | | | | | | | |
|----------------------------------|------------|--|--|---------|----------|---------------|----------|---------|---------|
| Reference EFFO-MSK-L07 | | IP / | 1 Rue de Terre Neuve Mini Parc du Verger Bâtiment E 91940 Les Ulis, France | | | | | | |
| Designation - | | Mail: sales@effilux.fr Tel : +33 9 72 52 70 03 www.effilux.com | | | | | | | |
| Rev / | Unit : mm | General Tolerances | | | | | | | |
| Scale 5:1 | Size A3 | Page 1/1 | <table border="0"> <tr> <td>X ≤ 300</td> <td>TOL ±0,2</td> </tr> <tr> <td>300 < X < 800</td> <td>TOL ±0,5</td> </tr> <tr> <td>X ≥ 800</td> <td>TOL ± 1</td> </tr> </table> | X ≤ 300 | TOL ±0,2 | 300 < X < 800 | TOL ±0,5 | X ≥ 800 | TOL ± 1 |
| X ≤ 300 | TOL ±0,2 | | | | | | | | |
| 300 < X < 800 | TOL ±0,5 | | | | | | | | |
| X ≥ 800 | TOL ± 1 | | | | | | | | |



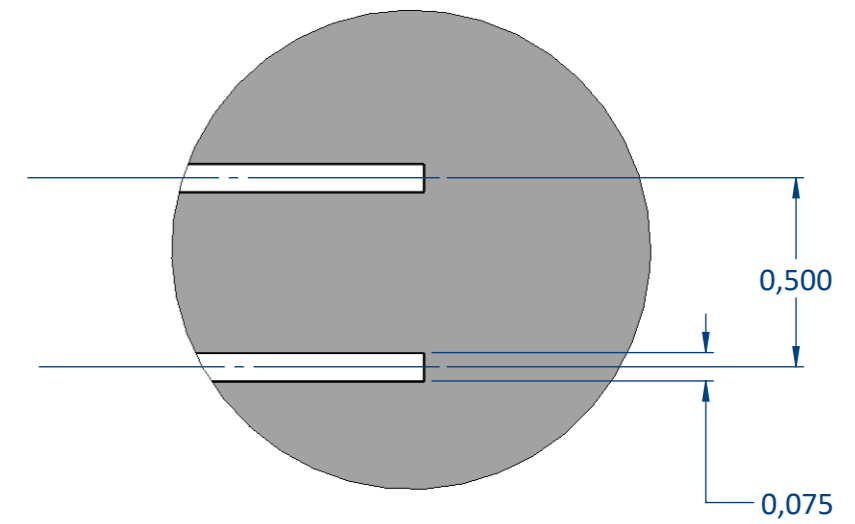
THIS DOCUMENT AND THE INFORMATION IT CONTAINS ARE PROPERTY OF EFFILUX AND CONFIDENTIAL. THEY SHALL NOT BE REPRODUCED NOR DISCLOSED TO ANY PERSON EXCEPT TO THOSE HAVING A NEED TO KNOW THEM WITHOUT PRIOR WRITTEN CONSENT OF EFFILUX

CE DOCUMENT ET LES INFORMATIONS QU'IL CONTIENT SONT CONFIDENTIELS ET SONT LA PROPRIETE EXCLUSIVE DE EFFILUX. ILS NE DOIVENT ETRE COMMUNIQUEES QU'aux PERSONNES AYANT A EN CONNAITRE ET NE PEUVENT ETRE REPRODUITS NI DIVULGUES A TOUTE AUTRE PERSONNE SANS AUTORISATION PREALABLE ECRITE PAR EFFILUX

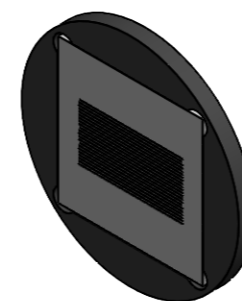
EFFECTIVE AREA



DETAIL OF THE PATERN



DETAIL A
SCALE 50 : 1



NOTE : ALL DIMENSIONS ARE IN MILLIMETERS

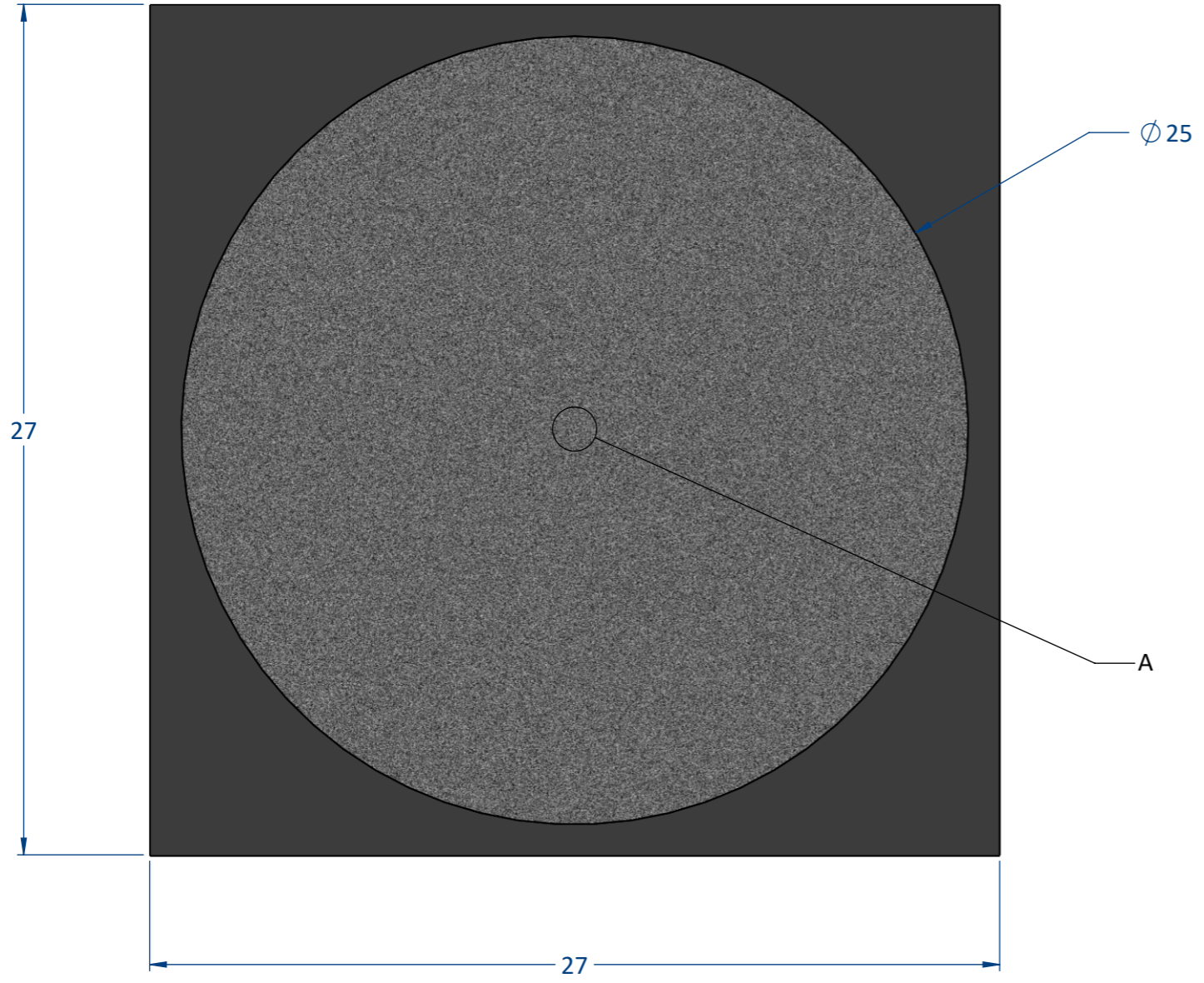
| | | |
|-----------|----|------------|
| DES/ DRA. | cd | 23/04/2024 |
| APPROVED | cd | 23/04/2024 |

| | | | | |
|----------------------------------|------------|--|---|--|
| Reference EFFO-MSK-L08 | | IP / | 1 Rue de Terre Neuve Mini Parc du Verger Bâtiment E 91940 Les Ulis, France | |
| Designation - | | Mail: sales@effilux.fr Tel : +33 9 72 52 70 03 www.effilux.com | | |
| Rev / | Unit : mm | General Tolerances | | |
| Scale 5:1 | Size A3 | Page 1/1 | X ≤ 300 TOL ±0,2 300 < X < 800 TOL ±0,5 X ≥ 800 TOL ± 1 | |

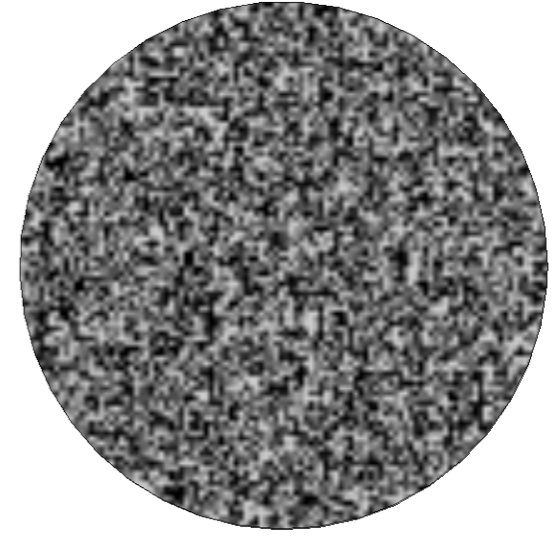
THIS DOCUMENT AND THE INFORMATION IT CONTAINS ARE PROPERTY OF EFFILUX AND CONFIDENTIAL. THEY SHALL NOT BE REPRODUCED NOR DISCLOSED TO ANY PERSON EXCEPT TO THOSE HAVING A NEED TO KNOW THEM WITHOUT PRIOR WRITTEN CONSENT OF EFFILUX

CE DOCUMENT ET LES INFORMATIONS QU'IL CONTIENT SONT CONFIDENTIELS ET SONT LA PROPRIETE EXCLUSIVE DE EFFILUX. ILS NE DOIVENT ETRE COMMUNIQUEES QU' AUX PERSONNES AYANT A EN CONNAITRE ET NE PEUVENT ETRE REPRODUITS NI DIVULGUES A TOUTE AUTRE PERSONNE SANS AUTORISATION PREALABLE ECRITE PAR EFFILUX

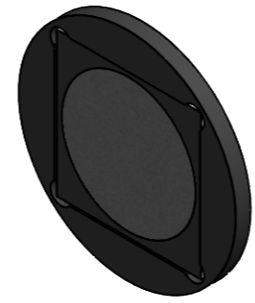
EFFECTIVE AREA



DETAIL OF THE PATERN



DETAIL A
SCALE 50 : 1



NOTE : ALL DIMENSIONS ARE IN MILLIMETERS

| | | |
|-----------|----|------------|
| DES/ DRA. | cd | 23/04/2024 |
| APPROVED | cd | 23/04/2024 |

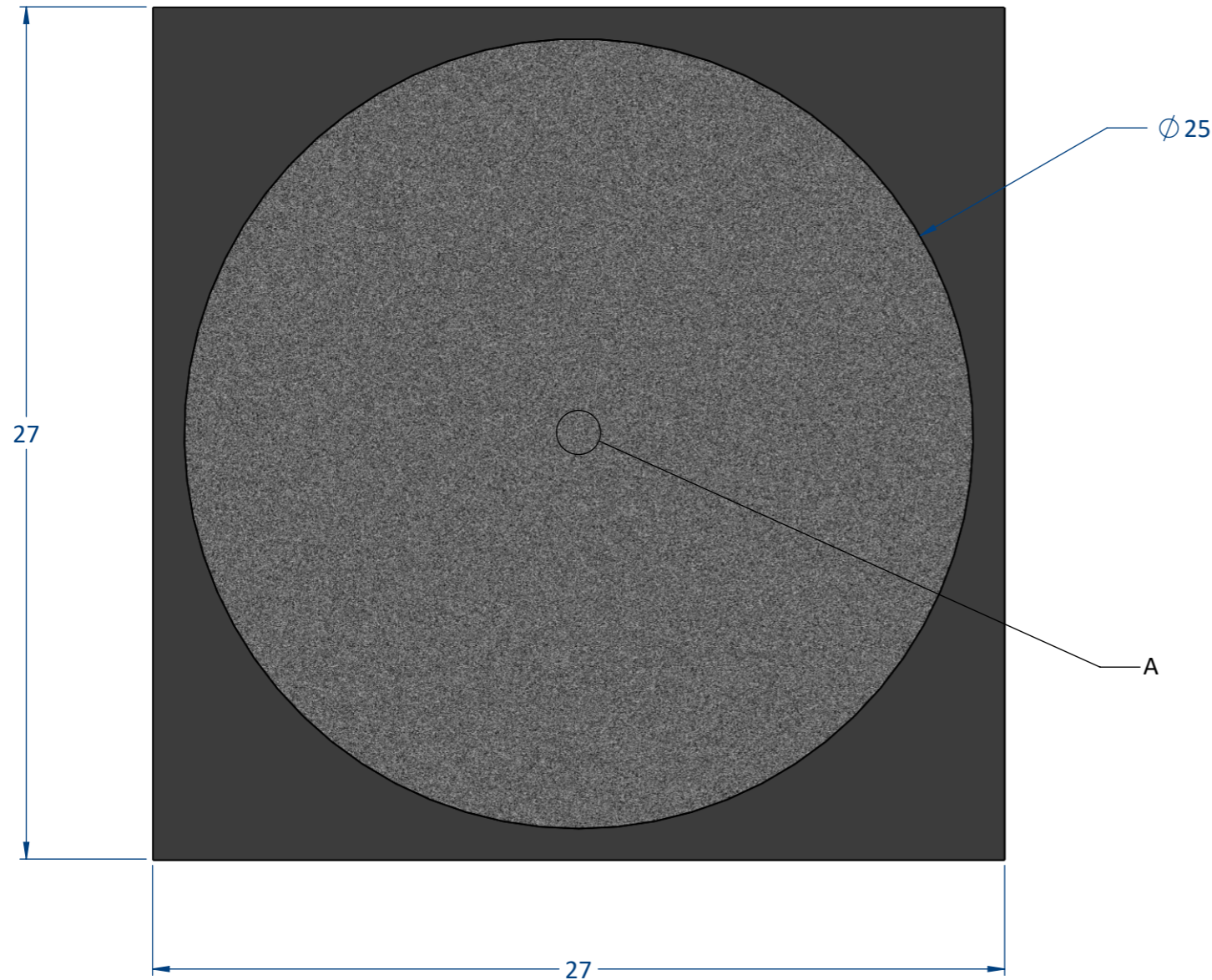
| | | | | | | | | | | |
|----------------------------------|------------|--|--|--|---------|----------|---------------|----------|---------|---------|
| Reference EFFO-MSK-C02 | | IP / | 1 Rue de Terre Neuve Mini Parc du Verger Bâtiment E 91940 Les Ulis, France | | | | | | | |
| Designation - | | Mail: sales@effilux.fr Tel : +33 9 72 52 70 03 www.effilux.com | | | | | | | | |
| Rev / | Unit : mm | General Tolerances | | | | | | | | |
| Scale 5:1 | Size A3 | Page 1/1 | <table border="0"> <tr> <td>X ≤ 300</td> <td>TOL ±0,2</td> </tr> <tr> <td>300 < X < 800</td> <td>TOL ±0,5</td> </tr> <tr> <td>X ≥ 800</td> <td>TOL ± 1</td> </tr> </table> | | X ≤ 300 | TOL ±0,2 | 300 < X < 800 | TOL ±0,5 | X ≥ 800 | TOL ± 1 |
| X ≤ 300 | TOL ±0,2 | | | | | | | | | |
| 300 < X < 800 | TOL ±0,5 | | | | | | | | | |
| X ≥ 800 | TOL ± 1 | | | | | | | | | |



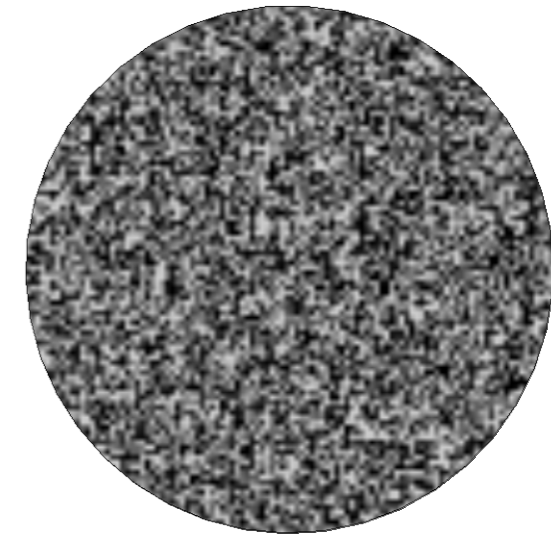
THIS DOCUMENT AND THE INFORMATION IT CONTAINS ARE PROPERTY OF EFFILUX AND CONFIDENTIAL. THEY SHALL NOT BE REPRODUCED NOR DISCLOSED TO ANY PERSON EXCEPT TO THOSE HAVING A NEED TO KNOW THEM WITHOUT PRIOR WRITTEN CONSENT OF EFFILUX

CE DOCUMENT ET LES INFORMATIONS QU'IL CONTIENT SONT CONFIDENTIELS ET SONT LA PROPRIETE EXCLUSIVE DE EFFILUX. ILS NE DOIVENT ETRE COMMUNIQUEES QU' AUX PERSONNES AYANT A EN CONNAITRE ET NE PEUVENT ETRE REPRODUITS NI DIVULGUES A TOUTE AUTRE PERSONNE SANS AUTORISATION PREALABLE ECRITE PAR EFFILUX

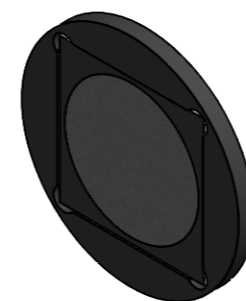
EFFECTIVE AREA



DETAIL OF THE PATERN



DETAIL A
SCALE 50 : 1



NOTE : ALL DIMENSIONS ARE IN MILLIMETERS

| | | |
|-----------|----|------------|
| DES/ DRA. | cd | 23/04/2024 |
| APPROVED | cd | 23/04/2024 |

| | | | | |
|----------------------------------|------------|--|---|--|
| Reference EFFO-MSK-C10 | | IP / | 1 Rue de Terre Neuve Mini Parc du Verger Bâtiment E 91940 Les Ulis, France | |
| Designation - | | Mail: sales@effilux.fr Tel : +33 9 72 52 70 03 www.effilux.com | | |
| Rev / | Unit : mm | General Tolerances | | |
| Scale 5:1 | Size A3 | Page 1/1 | X ≤ 300 TOL ±0,2 300 < X < 800 TOL ±0,5 X ≥ 800 TOL ± 1 | |