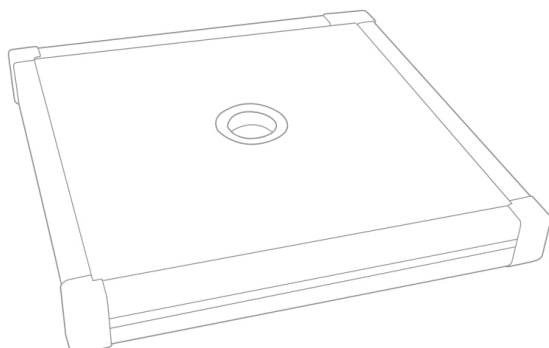


HOMOGENEOUS FLAT LIGHT WITH CAMERA HOLE

ELF-C39 SERIES - COGNEX



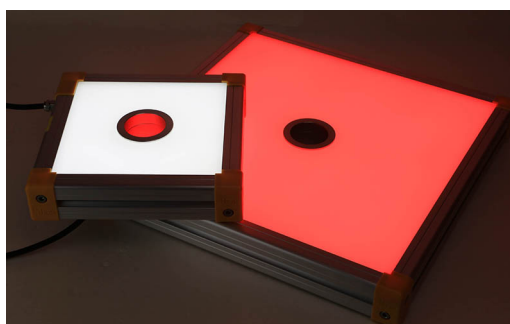
The ELF-C39 Series is a flat light with camera hole, offering **high uniformity** combined with an **integrated controller**.

This makes the ELF-C39 the ideal front light for highly reflective work pieces and applications with a high Field of View.

The integrated controller offers intensity control to the user.

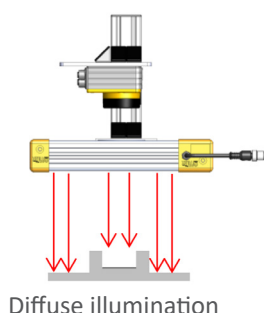
MAIN FEATURES

Intense illumination
Diffuse light & High Homogeneity
Standard connections and fasteners
Long life time and few maintenance



Connector	M12 - 4 contacts (1 or 2 depending on the size)
Power supply	24V DC
Illumination mode	Continuous with a DIM process [0-24V] - Analog voltage or Strobe mode
Cable length	500mm
Available wavelength	White, Blue, Red, IR (other wavelengths upon request)
Available sizes	From 150mmx150mm to 400mmx400mm (other sizes upon request)
Thickness	43.2mm
Fastener	Built-in M6 T-nut slot profile
Material	Device body: Aluminum alloy & ABS; Window: Acrylic
Working temperature	0° to 50° C
IP code	IP50

APPLICATIONS

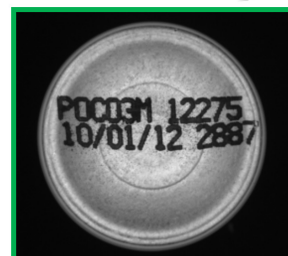


Diffuse illumination

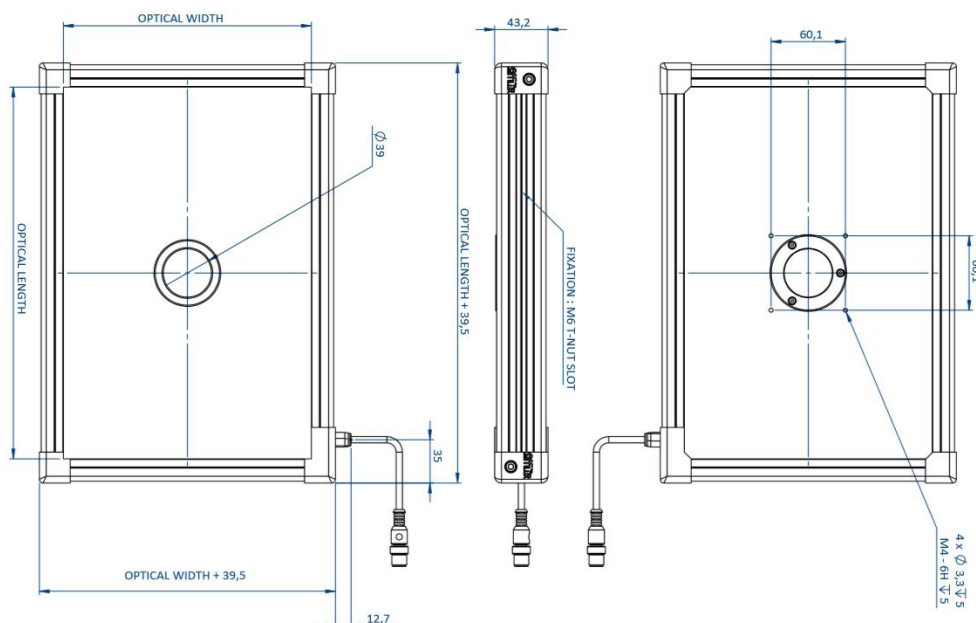
Direct illumination ❌



ELF-C illumination ✅



DIMENSIONS (MM)



IMPORTANT NOTES:

Length M12 Cables (Cable gland → Connector) : 500mm

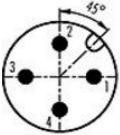
For the 400x400 size, the ELF-C39 is supplied with **2 M12 connectors**. Please refer to the specific drawing to see the layout.

ELECTRONICAL SPECIFICATIONS

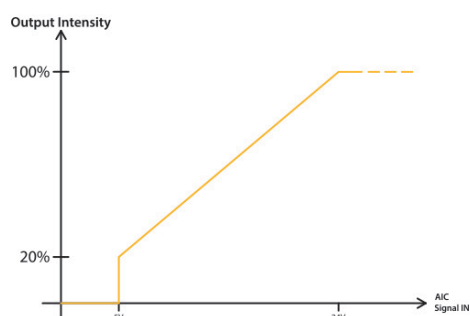


Connector pinout

The ELF-C39 Series requires 24V DC input power. Note the AIC pin **needs to be connected**.

Connector pinout	Number	Color Contact	Designation
 <p>M12 male connector</p> <p><i>NUMBER OF CONNECTOR DEPENDS ON THE SIZE OF THE ELF-C39</i></p>	1	Brown	+24V DC
	2	White	N/A
	3	Blue	GND
	4	Black	AIC: Analog Intensity Control for Dimming control Consumption depending on the size (between 0.3mA to 10mA) Max 24V DC

Dimming control feature



IMPORTANT NOTE:

For the 400X400 size, the ELF-C39 is supplied with **2 M12 connectors**. In that case, the AIC contact is on the first connector, the one closer to the edge. (The AIC contact of the second connector is not assigned).

PRODUCT LINE UP

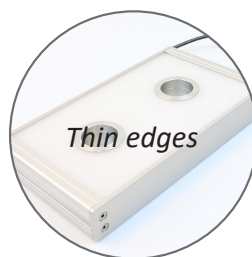
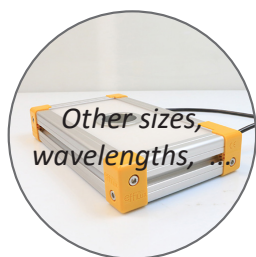
Series	Part Number	Color	Wavelength / Color temperature	Max Power Consumption	Connector	Weight	Optical Width	Optical Length	Size of the camera hole
ELF-C39	ELF-C39-150X150SW	White	5500 K ± 500 K	20W	M12	1 200g	150mm	150mm	39mm
ELF-C39	ELF-C39-150X150BL	Blue	465nm						
ELF-C39	ELF-C39-150X150RD	Red	625nm						
ELF-C39	ELF-C39-150X150IR	Infrared	850nm						
ELF-C39	ELF-C39-200X200SW	White	5500 K ± 500 K	30W	M12	1 900g	200mm	200mm	39mm
ELF-C39	ELF-C39-200X200BL	Blue	465nm						
ELF-C39	ELF-C39-200X200RD	Red	625nm						
ELF-C39	ELF-C39-200X200IR	Infrared	850nm						
ELF-C39	ELF-C39-250X250SW	White	5500 K ± 500 K	45W	M12	2 100g	250mm	250mm	39mm
ELF-C39	ELF-C39-250X250BL	Blue	465nm						
ELF-C39	ELF-C39-250X250RD	Red	625nm						
ELF-C39	ELF-C39-250X250IR	Infrared	850nm						
ELF-C39	ELF-C39-300X300SW	White	5500 K ± 500 K	65W	M12	3 500g	300mm	300mm	39mm
ELF-C39	ELF-C39-300X300BL	Blue	465nm						
ELF-C39	ELF-C39-300X300RD	Red	625nm						
ELF-C39	ELF-C39-300X300IR	Infrared	850nm						
ELF-C39	ELF-C39-400X400SW-2C	White	5500 K ± 500 K	110W	2 x M12	5 000g	400mm	400mm	39mm
ELF-C39	ELF-C39-400X400BL-2C	Blue	465nm						
ELF-C39	ELF-C39-400X400RD-2C	Red	625nm						
ELF-C39	ELF-C39-400X400IR-2C	Infrared	850nm						

For cables refer to the ECB cables datasheet.

For fasteners and camera brackets refer to the BK-EL datasheet.

CUSTOM - ON REQUEST

OPTIONS AVAILABLE ON REQUEST



EU DIRECTIVE



In accordance with EU machinery directive, EMC directive, and low voltage directive, machines and electronic devices not marked with the CE logo are subject to distribution restrictions within the EU. All EL Series products will maintain the EU mandate compatibility of our customers' machinery and electronic devices.

RoHS DIRECTIVE

All products from the EL Series comply with the RoHS Directive.

CONTACT INFORMATION

MANUFACTURER

EFFILUX

1 Rue de terre Neuve
Mini Parc du Verger - Bâtiment E
91940, Les Ulis, FRANCE

WEBSITE

www.el-series.com

SALES & TECHNICAL SUPPORT

CCS AMERICA, Inc.

10 State Street, Suite 103
Woburn, MA 01801, USA

TEL: +1-781-272-6900

E-MAIL: sales@ccsamerica.com

SITE: www.ccsamerica.com

CCS EUROPE N.V.

Bergensesteenweg 421B 1600
Sint-Pieters-Leeuw, BELGIUM

TEL: +32-2-333-0080

E-MAIL: sales@ccseu.com

SITE: www.ccs-grp.com