

FLOOD TYPE BAR LIGHT

ELRC SERIES - ACCESSORIES: POLARIZER

APPLICATION

Using the polarizer accessory, it is possible to eliminate glare from your workpiece making it easier to acquire a suitable image for the application.



OPTICAL FLEXIBILITY

How to insert the polarizer in the ELRC



Open the ELRC



Place the polarizer on top of the window

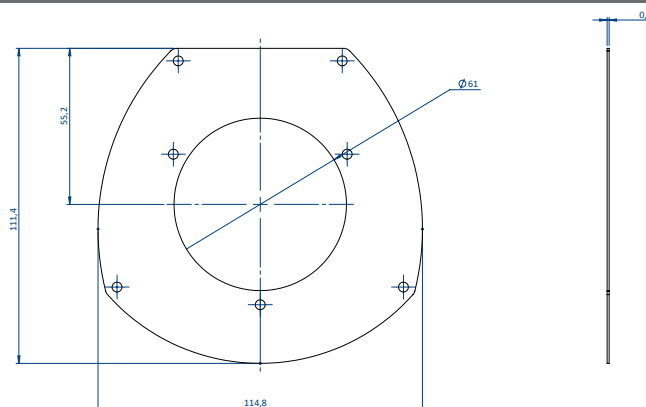


Close the product

IMPORTANT NOTES:

- The polarizer needs to be placed on top of the window and not below.
- With the polarizer accessory, the ELRC Series is IP50.
- With continuous use of Blue or White ELRC light, the polarizer may deteriorate over time.

DIMENSIONS (MM)



EU DIRECTIVE



In accordance with EU machinery directive, EMC directive, and low voltage directive, machines and electronic devices not marked with the CE logo are subject to distribution restrictions within the EU. All EL Series products will maintain the EU mandate compatibility of our customers' machinery and electronic devices.

ROHS DIRECTIVE

All products from the EL Series comply with the RoHS Directive.

CONTACT INFORMATION

MANUFACTURER

EFFILUX

1 Rue de terre Neuve
Mini Parc du Verger - Bâtiment E
91940, Les Ulis, FRANCE

WEBSITE

www.el-series.com

SALES & TECHNICAL SUPPORT

CCS AMERICA, Inc.

10 State Street, Suite 103
Woburn, MA 01801, USA

TEL: +1-781-272-6900

E-MAIL: sales@ccsamerica.com

SITE: www.ccsamerica.com

CCS EUROPE N.V.

Bergensesteenweg 421B 1600
Sint-Pieters-Leeuw, BELGIUM

TEL: +32-2-333-0080

E-MAIL: sales@ccseu.com

SITE: www.ccs-grp.com