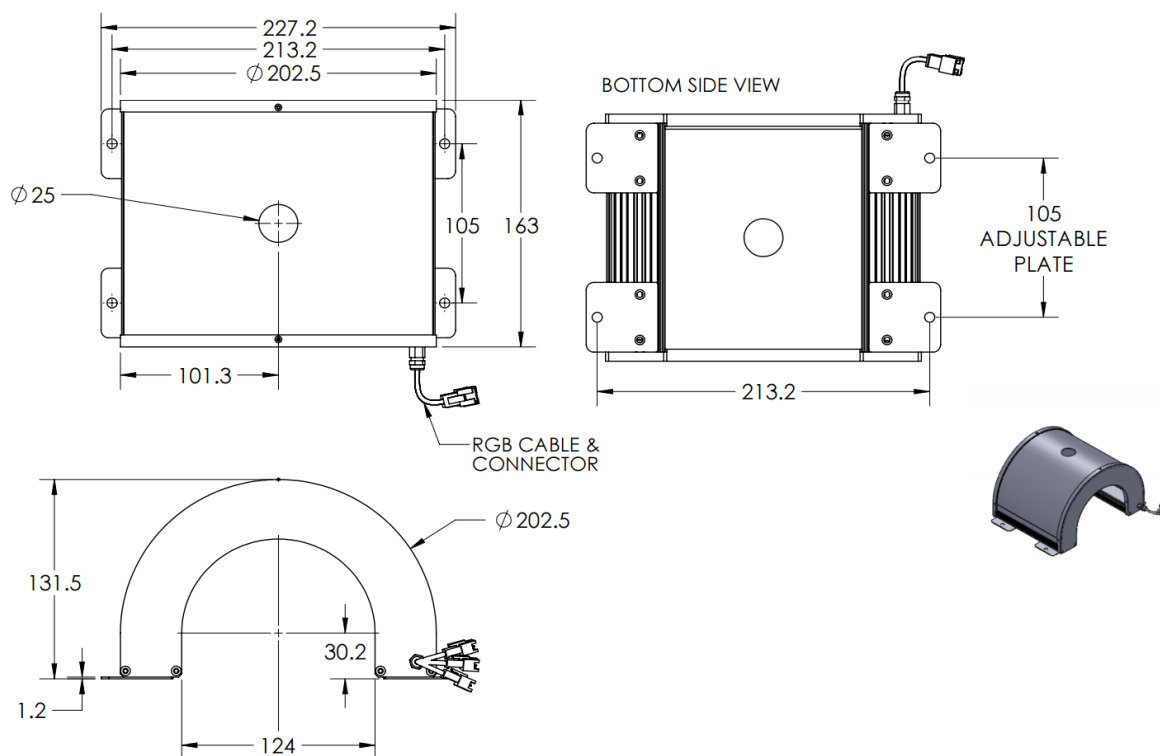




ILLUMINATOR DATA-ID

IDT3-00-200-1-RGB-24V

Lighting Dimension




Mechanical Information	
Casing Material	Aluminium
Storage Temperature Range	Temp 0-45°C, Humidity 20-85%
Weight	967 g
Length / Outer Diameter	163 mm
Width / Inner Diameter	227.2 mm
Thickness / Height	131.5 mm



ILLUMINATOR DATA-ID

IDT3-00-200-1-RGB-24V

Optical Information									
Part Number		IDT3-00-200-1-RGB-24V							
LED Color		RED			GREEN			BLUE	
Wavelength	(nm)	630			525			470	
Intensity (±15%)	(Lux)								
Working Distance	(mm)	40	50	60	40	50	60	40	50 60
Illumination (number of row)		1							
Illumination Active Area									
Active Length / Outer Diameter	(mm)	147							
Active Width / Inner Diameter	(mm)	126							
Emission angle	(deg.)	0							
Eye Safety Class (IEC62471)		EXEMPT			EXEMPT			II	
Electrical Information									
Lighting Supply Voltage (constant voltage mode)		24V ± 2%							
Continuous Current	(mA)	RED	250		GREEN	200		BLUE	200
Power Consumption	(W)		6			4.8			4.8
Lighting casing temperature, Operating after 60 minutes	°C		51.5			51.5			51.5
Max. continous current of RED, GREEN & BLUE LEDs on at the same time	(mA)	RED, GREEN & BLUE LEDs on at the same time are not recommended							
Strobe Mode Specification									
Pulse Operation		YES							
Max. Lighting Supply Voltage (Constant voltage power supply)	(V)	Pulsing at 24VDC to 48VDC, 0-10% Duty Cycle, Recommended at 36VDC							
Pulse Current, (Max. 10msec) (Constant current power supply)	(mA)	RED	750		GREEN	600		BLUE	600
Max. pulse current of RED, GREEN & BLUE LEDs on at the same time	(V)	RED, GREEN & BLUE LEDs on at the same time are not recommended							
Max. Trigger Pulse Duration	(msec)	10							
Duty Cycle		0-10%							
Additional Information									
Additional Cooling Method		Attached to machine part for better heat dissipation							
Intensity Controller Selection		ANG, SD, ST & SDA Series							
CE Conformity		YES							
RoHS Compliance		YES							
Connection									
Connector Type (Default):		JST SMR-03V							
Cable Length out from lighting :	(mm)	500							
Pin Configuration :		Pin			Signal		Cable Color		
		1			LED +		RED		
		2			N.C.		---		
		3			LED -		WHITE		
									
Application									
Illumination Type		Indirect Illumination							
Application Use		Crack, chip, stains and mark on cylindrical surface or shafts.							