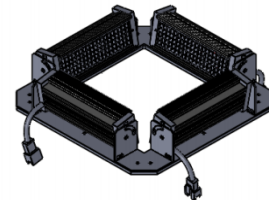
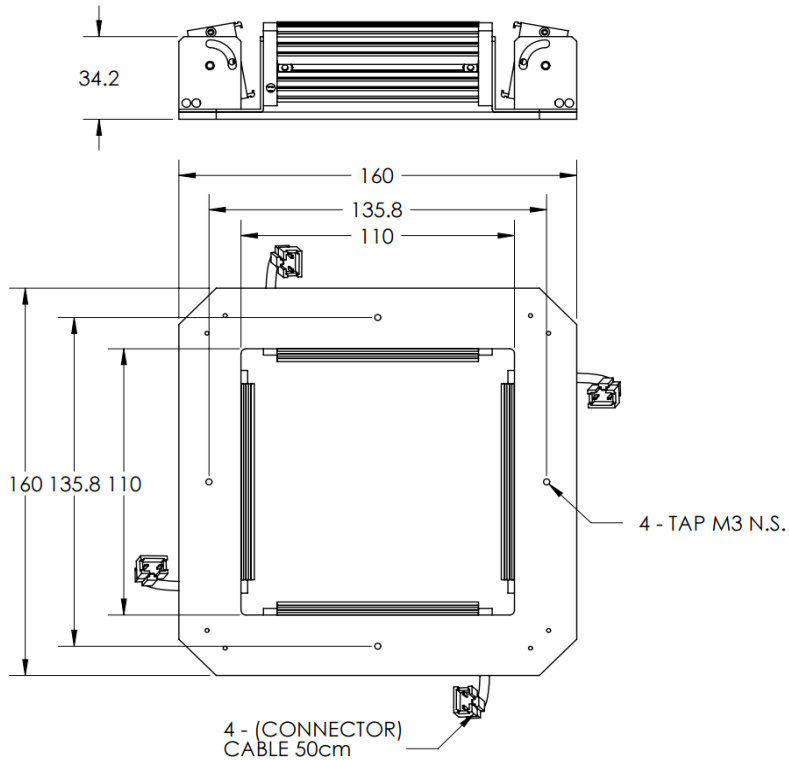




# ILLUMINATOR DATA-ID

**LBRQ-00-080-6-R-24V**

## Lighting Dimension




Mechanical Information	
Casing Material	Aluminium
Storage Temperature Range	Temp 0 - 45°C, Humidity 20-85%
Weight	500 g
Length / Outer Diameter	160 mm
Width / Inner Diameter	110 mm
Thickness / Height	34.2 mm



# ILLUMINATOR DATA-ID

## LBRQ-00-080-6-R-24V

<b>Optical Information</b>				
Part Number		LBRQ-00-080-6-R-24V		
LED Color		RED		
Wavelength	(nm)	630		
Intensity (±15%)	(Lux)	6532	5509.6	4686
Working Distance	(mm)	192	203	214
Illumination (number of row)		6		
Illumination Active Area				
Active Length / Outer Diameter	(mm)	160		
Active Width / Inner Diameter	(mm)	110		
Emission angle	(deg.)	0		
Eye Safety Class ( IEC62471 )		EXEMPT		
<b>Electrical Information</b>				
Lighting Supply Voltage (constant voltage mode)		24V ± 2%		
Continuous Current	(mA)	624		
Power Consumption	(W)	14.98		
Lighting casing temperature, Operating after 60 minutes	°C	45.1		
<b>Strobe Mode Specification</b>				
Pulse Operation		YES		
Max. Lighting Supply Voltage (Constant voltage power supply)	(V)	Pulsing at 24VDC to 48VDC, 0-10% Duty Cycle, Recommended at 36VDC		
Pulse Current, (Max. 10msec) (Constant current power supply)	(mA)	1872		
Max. Trigger Pulse Duration	(msec)	10		
Duty Cycle		0-10%		
<b>Additional Information</b>				
Additional Cooling Method		Attached to machine part for better heat dissipation		
Intensity Controller Selection		ANG, ST, SD and SDA Series		
CE Conformity		YES		
RoHS Compliance		YES		
<b>Connection</b>				
Connector Type (Default):		JST SMR-03V		
Cable Length out from lighting :	(mm)	500		
Pin Configuration :		Pin	Signal	Cable Color
		1	LED +	RED
		2	N.C.	---
		3	LED -	WHITE
				
<b>Application</b>				
Illumination Type		Direct Illumination		
Application Use		General illumination, label inspection, character inspection, code recognition.		