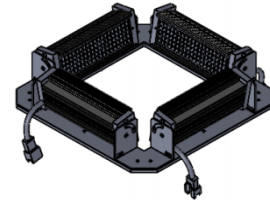
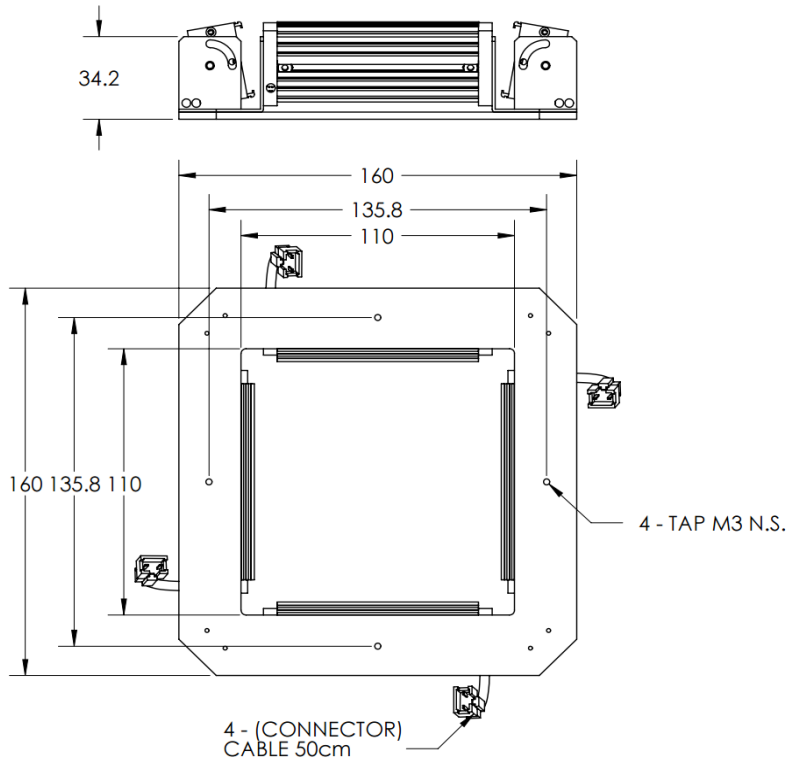




ILLUMINATOR DATA-ID

LBRQ-00-080-6-W-24V

Lighting Dimension




Mechanical Information	
Casing Material	Aluminium
Storage Temperature Range	Temp 0 - 45°C, Humidity 20-85%
Weight	500 g
Length / Outer Diameter	160 mm
Width / Inner Diameter	110 mm
Thickness / Height	34.2 mm



ILLUMINATOR DATA-ID

LBRQ-00-080-6-W-24V

Optical Information																													
Part Number		LBRQ-00-080-6-W-24V																											
LED Color		WHITE																											
Wavelength	(nm)	* Refer to the Chromaticity Table Below																											
Intensity (±15%)	(Lux)	12510.2	11388.4	10919.8																									
Working Distance	(mm)	192	203	214																									
Illumination (number of row)		6																											
Illumination Active Area																													
Active Length / Outer Diameter	(mm)	160																											
Active Width / Inner Diameter	(mm)	110																											
Emission angle	(deg.)	0																											
Eye Safety Class (IEC62471)		EXEMPT																											
*CHROMATICITY TABLE		<table border="1"> <tr> <td>X</td> <td>0.296</td> <td>0.287</td> <td>0.307</td> <td>0.311</td> <td></td> </tr> <tr> <td>Y</td> <td>0.276</td> <td>0.295</td> <td>0.315</td> <td>0.294</td> <td></td> </tr> </table> <table border="1"> <tr> <td>X</td> <td>0.311</td> <td>0.307</td> <td>0.33</td> <td>0.33</td> <td></td> </tr> <tr> <td>Y</td> <td>0.294</td> <td>0.315</td> <td>0.339</td> <td>0.318</td> <td></td> </tr> </table>				X	0.296	0.287	0.307	0.311		Y	0.276	0.295	0.315	0.294		X	0.311	0.307	0.33	0.33		Y	0.294	0.315	0.339	0.318	
X	0.296	0.287	0.307	0.311																									
Y	0.276	0.295	0.315	0.294																									
X	0.311	0.307	0.33	0.33																									
Y	0.294	0.315	0.339	0.318																									
Electrical Information																													
Lighting Supply Voltage (constant voltage mode)		24V ± 2%																											
Continuous Current	(mA)	576																											
Power Consumption	(W)	13.82																											
Lighting casing temperature, Operating after 60 minutes	°C	46.1																											
Strobe Mode Specification																													
Pulse Operation		YES																											
Max. Lighting Supply Voltage (Constant voltage power supply)	(V)	Pulsing at 24VDC to 48VDC, 0-10% Duty Cycle, Recommended at 36VDC																											
Pulse Current, (Max. 10msec) (Constant current power supply)	(mA)	1728																											
Max. Trigger Pulse Duration	(msec)	10																											
Duty Cycle		0-10%																											
Additional Information																													
Additional Cooling Method		Attached to machine part for better heat dissipation																											
Intensity Controller Selection		ANG, ST, SD and SDA Series																											
CE Conformity		YES																											
RoHS Compliance		YES																											
Connection																													
Connector Type (Default):		JST SMR-03V																											
Cable Length out from lighting :	(mm)	500																											
Pin Configuration :		Pin	Signal	Cable Color																									
		1	LED +	RED																									
		2	N.C.	---																									
		3	LED -	WHITE																									
																													
Application																													
Illumination Type		Direct Illumination																											
Application Use		General illumination, label inspection, character inspection, code recognition.																											