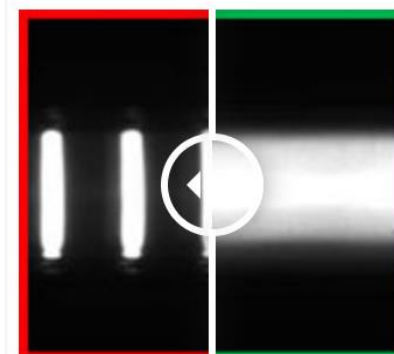


Linescan Application

Thanks to the optical accessory Linescan, the LED bar EFFI-Flex and EFFI-Smart are transformed into a **linear lighting** or a **darkfield lighting**.




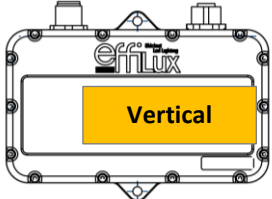
EFFI-Flex with linescan accessory



Without linescan VS With linescan

Effilux Linescan		
Name	Reference	Description
Linescan	EFFO-XXXX-LS	<u>Standard Linescan.</u> Material: Polycarbonate Diffusion angle : 50° (H) x 3° (V) Thickness: 0.254mm

Compatibility & References

Linescan Accessory				
Vertical = Direction of the linescan				
Product Range		Compatibility	Accessory's references	Product's reference
EFFI-Flex		<p><u>Typical configuration:</u> With TR window and lens in position P3. With TR window, cylindrical lens & lens in position P1.</p> <p>If used with a polarizer, be sure to put the polarizer on top of the linescan.</p>	EFFO-FLEX-LS-XX XX: number of LED	Add -LS
EFFI-Smart		<p><u>Typical configuration:</u> With TR window and lens in position P3.</p> <p>Not for IP69K version.</p> <p>If used with a polarizer, be sure to put the polarizer on top of the linescan.</p>	EFFO-SMART-LS-XX XX: number of LED	Add -LS

Please refer to the datasheet and the user manual of each product to install your accessory.

Products with a linescan integrated in standard:
EFFI-LINE, EFFI-FLEX-BL-CYL (similar installation than for the EFFI-Flex).